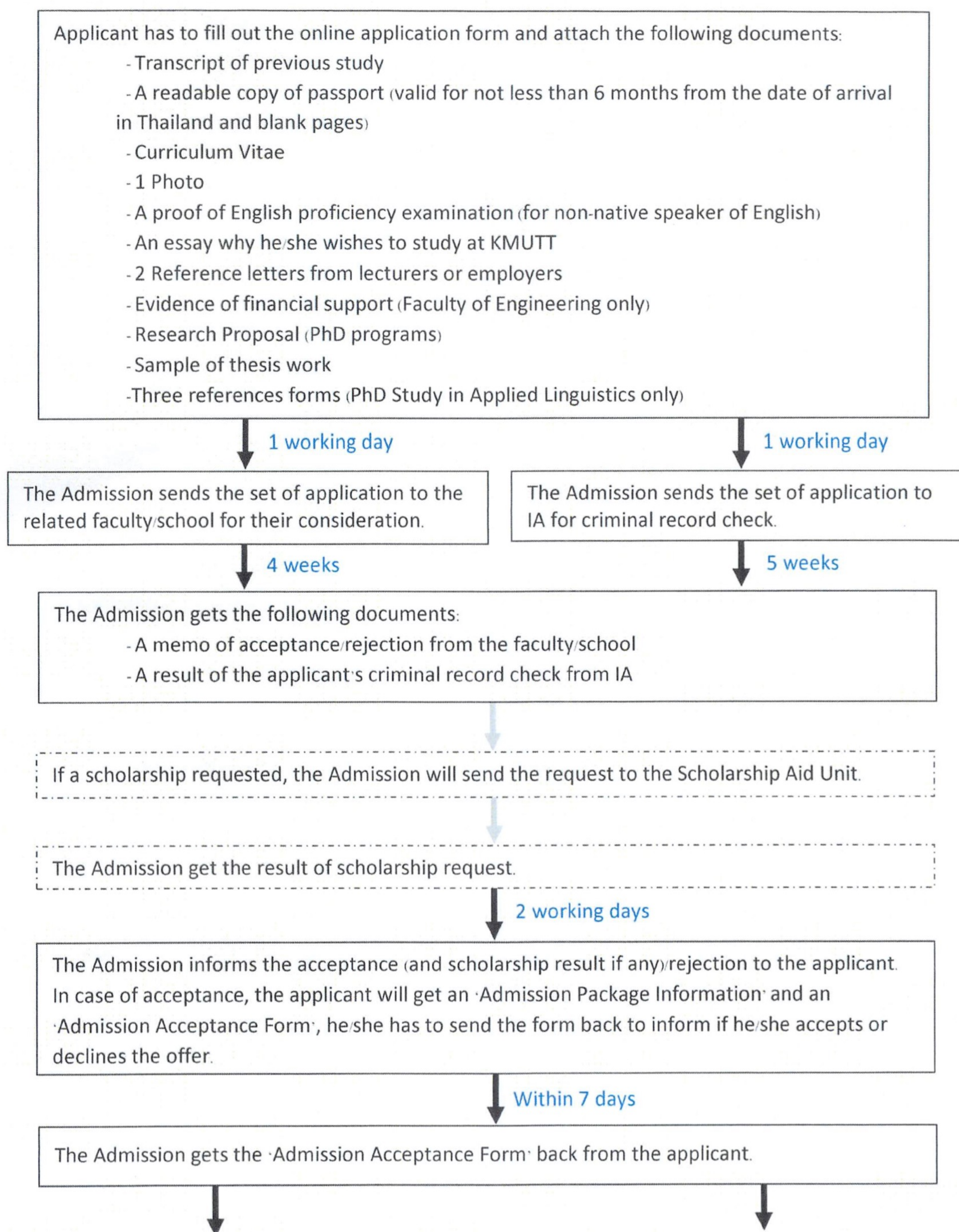


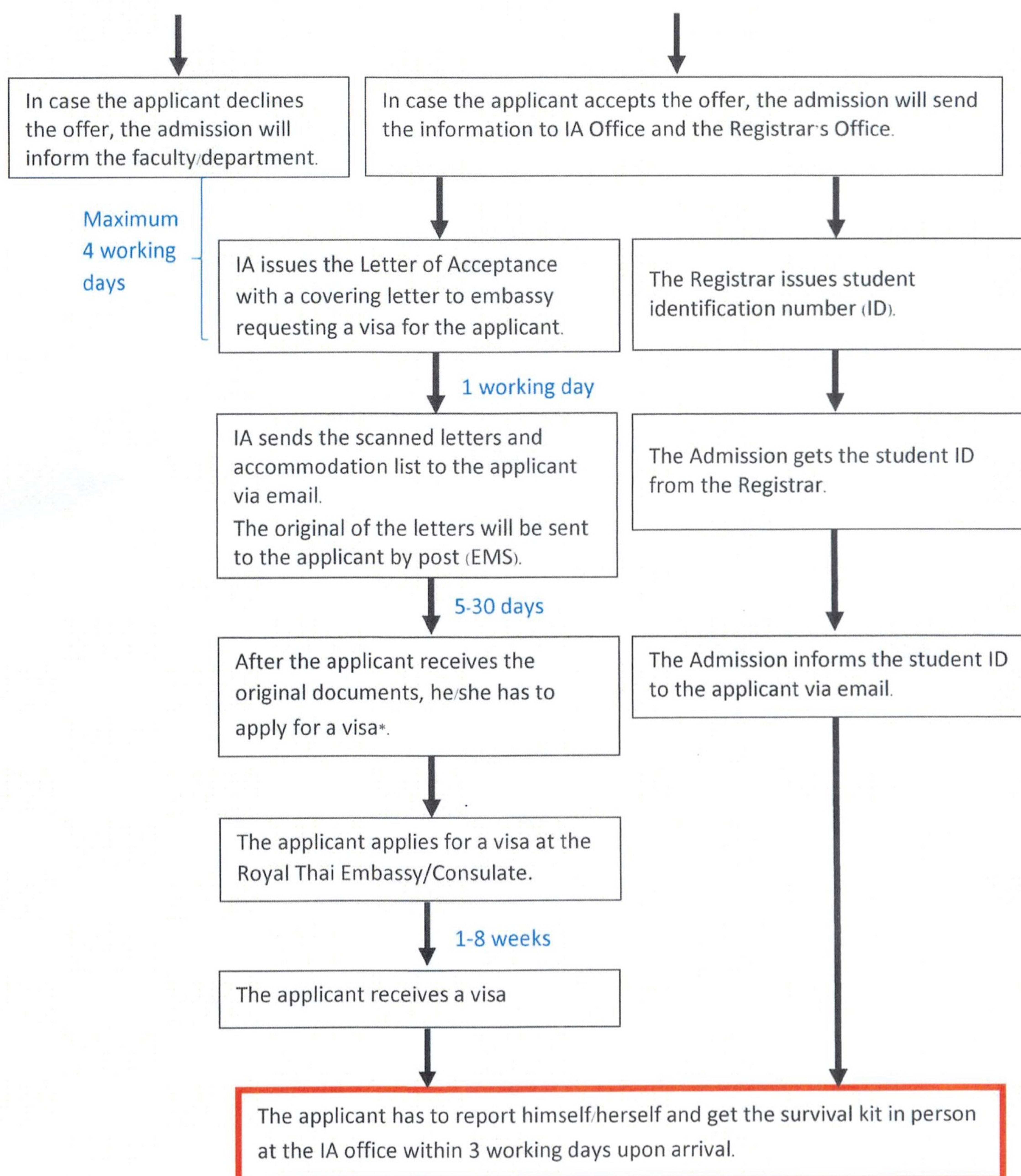
Work Procedure for International Students (Regular)

Applicants have to apply through the Admission online system



Work Procedure for International Students (Regular)

Applicants have to apply through the Admission online system



* Regular students **MUST** hold a student visa (Non-Immigrant 'ED' visa) under KMUTT unless they are working in Thailand and have a Non-Immigrant 'B' visa and a work permit, they are allowed to use that visa while studying at KMUTT.

Note:

1. For some embassies/consulates, the student will be required to book an accommodation and/or buy an air-ticket before applying for the visa.
2. The visa process may take from 1 – 8 weeks or longer depending on the embassy/consulate.
3. This is the timeline of visa processing during normal situation. The process time may take longer during the outbreak of COVID-19
4. IA will **NOT** facilitate for Non-Immigrant 'B' visa type.